



CALL FOR ENTRIES

PREVIEW TRAVEL
EXHIBIT &
MAIN EXHIBIT

An Explanation!

History of Sacred Threads Exhibits

Textile Talk:

[YouTube Link](#)

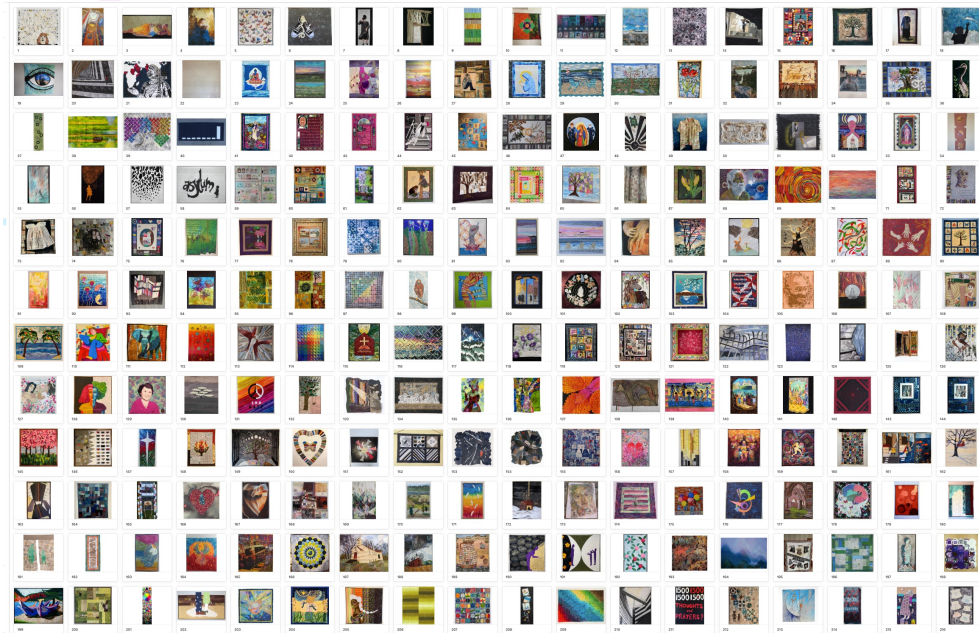
Documentary:

[YouTube Link](#)



Typically...

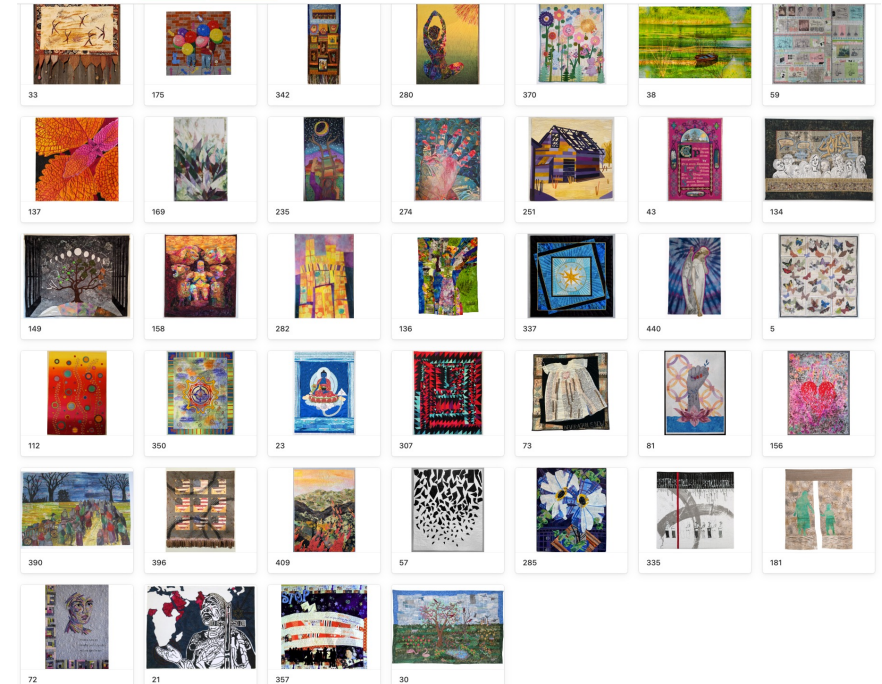
Main Exhibit
~230 Quilts



Summer – Every two years

Subset
Selected

Travel Exhibit
~35 Quilts



Following Main Exhibit –
on the road for 2+ years.

Medium size to be rolled into crates

The Basics for Today

- “Main Exhibit” will be in 2025 in the Indianapolis area
 - ~ 230 quilts
 - Expected to be in the summer or early fall
 - Most likely July or September



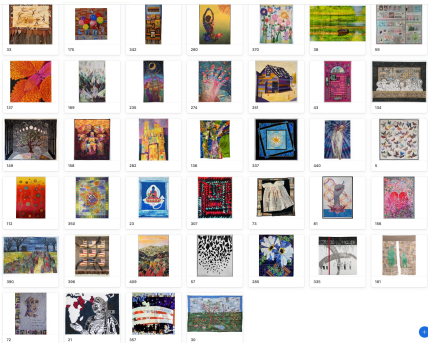
The Basics for Today (cont.)

- “Preview Travel Exhibit” will debut in Houston at the International Quilt Festival in November 2024
 - ~ 35 quilts will travel for three years
 - Will be included in the main exhibit in Indianapolis

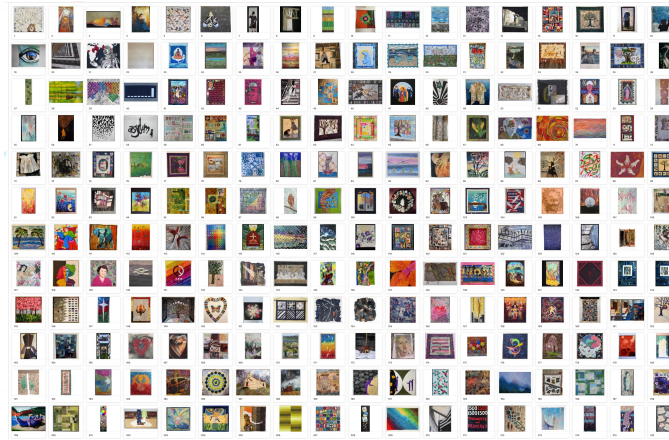


This Time...

Preview Travel Exhibit
~35 Quilts
Debuts Fall of 2024

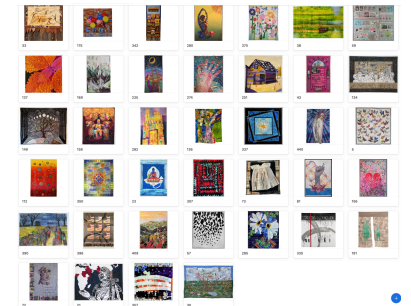


Will be Included



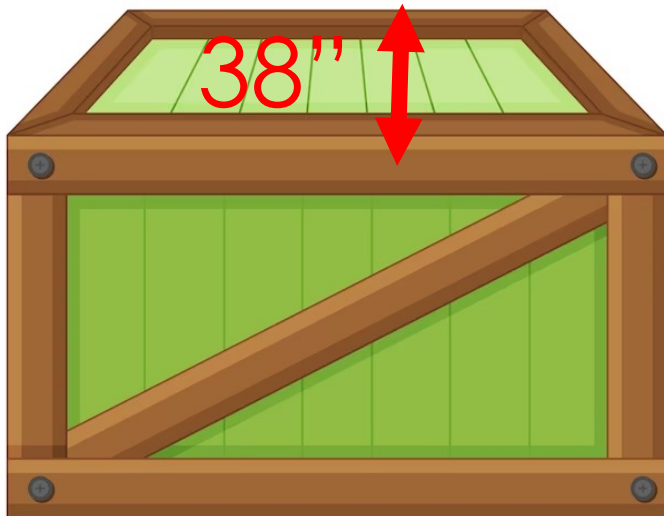
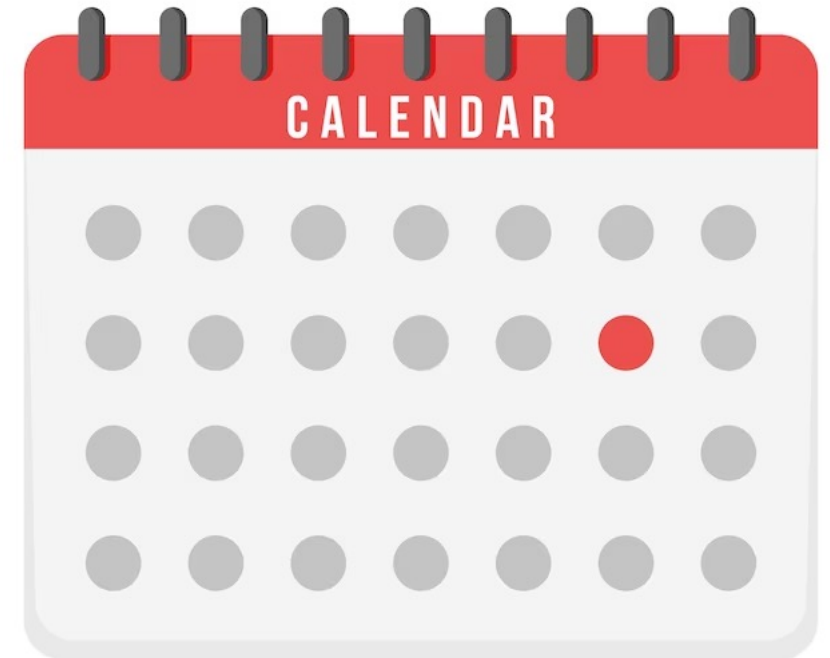
Main Exhibit – Summer of 2025
~230 Quilts

Preview Travel
Exhibit
back on the
road for
2+ more years



How will the call for entries work?

- We will open the travel exhibit call for entries in January 2024
- **Deadline of April 30, 2024**



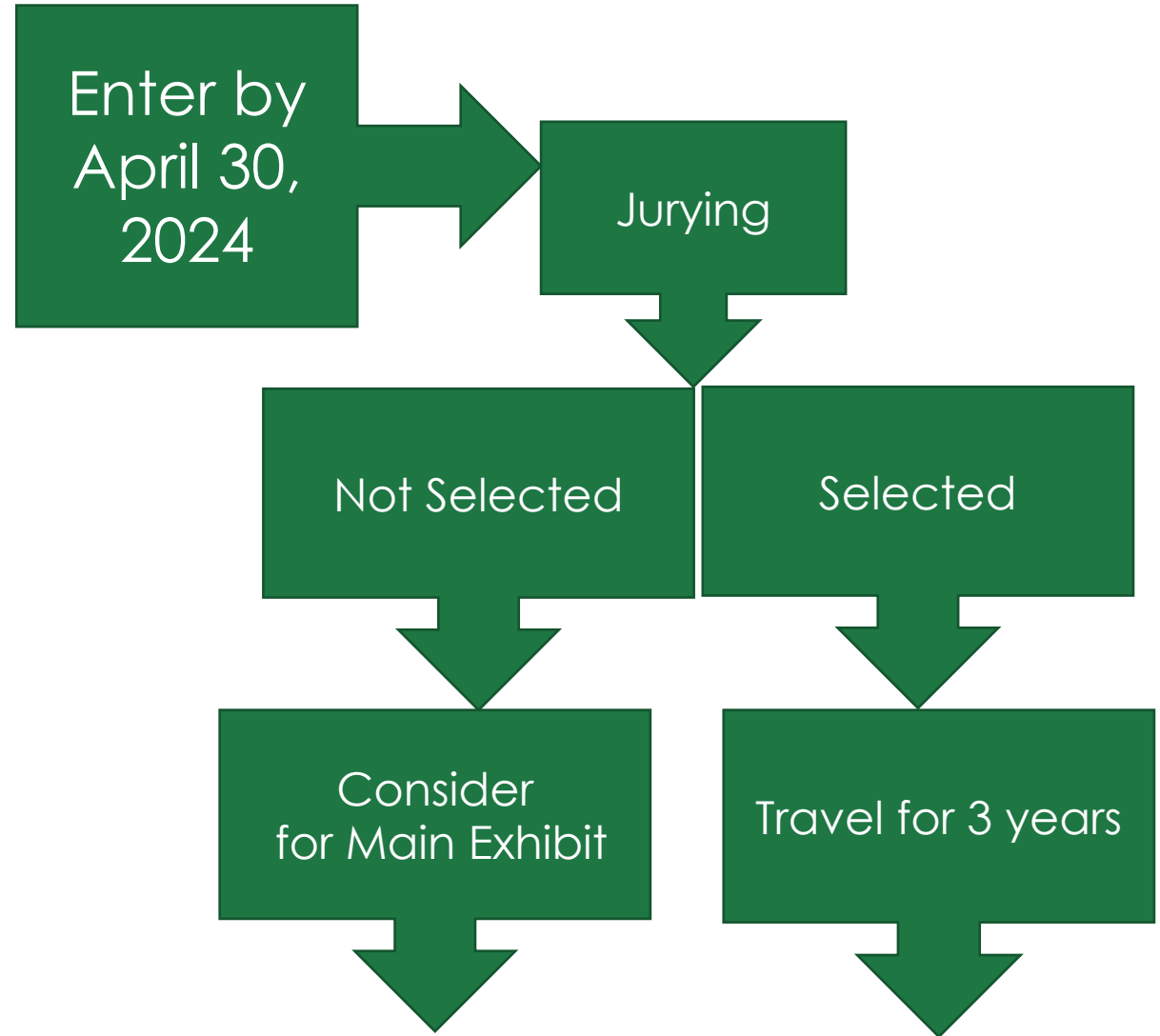
- Quilts are rolled
- The limit is 38" in one dimension
i.e., a 38" x 70" quilt can be rolled with the 38" along the length of the roll



How will the two call for entries work (cont.)?

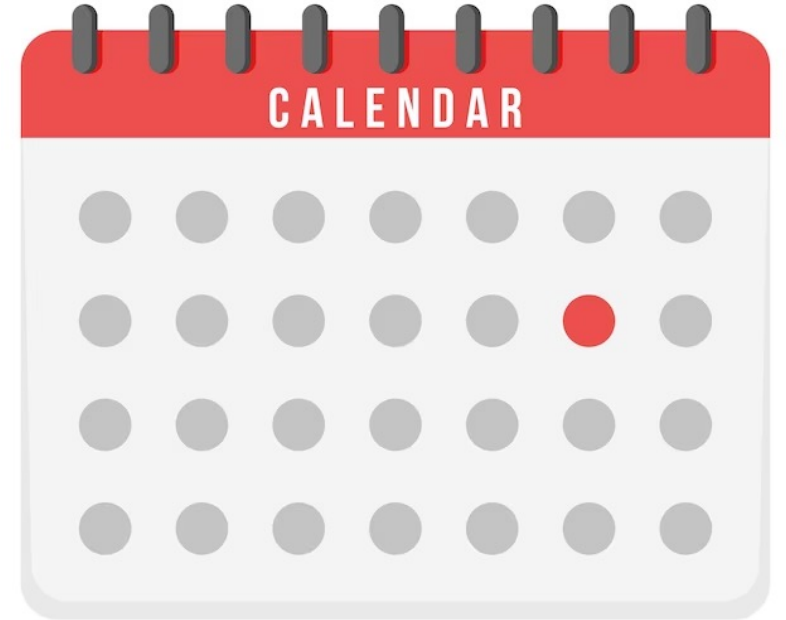
2 • Artists may enter two quilts by the travel deadline

\$ • Early Bird pricing of \$15 per entry



Main Exhibit Call for Entries

- Deadline of January 10, 2025
- Fee \$20 per entry
- Enter two quilts
- Dimensions max is 108" for both width and height
- Any quilts entered during travel process and not selected will be considered
- So, an artist could enter up to 4 quilts total



Need more info?

- Check out our call for entries page:
- <https://www.sacredthreadsquilts.com/cfe.html>
- More questions:
- email the chair, Barb Triscari: betoncat@betoncat.com